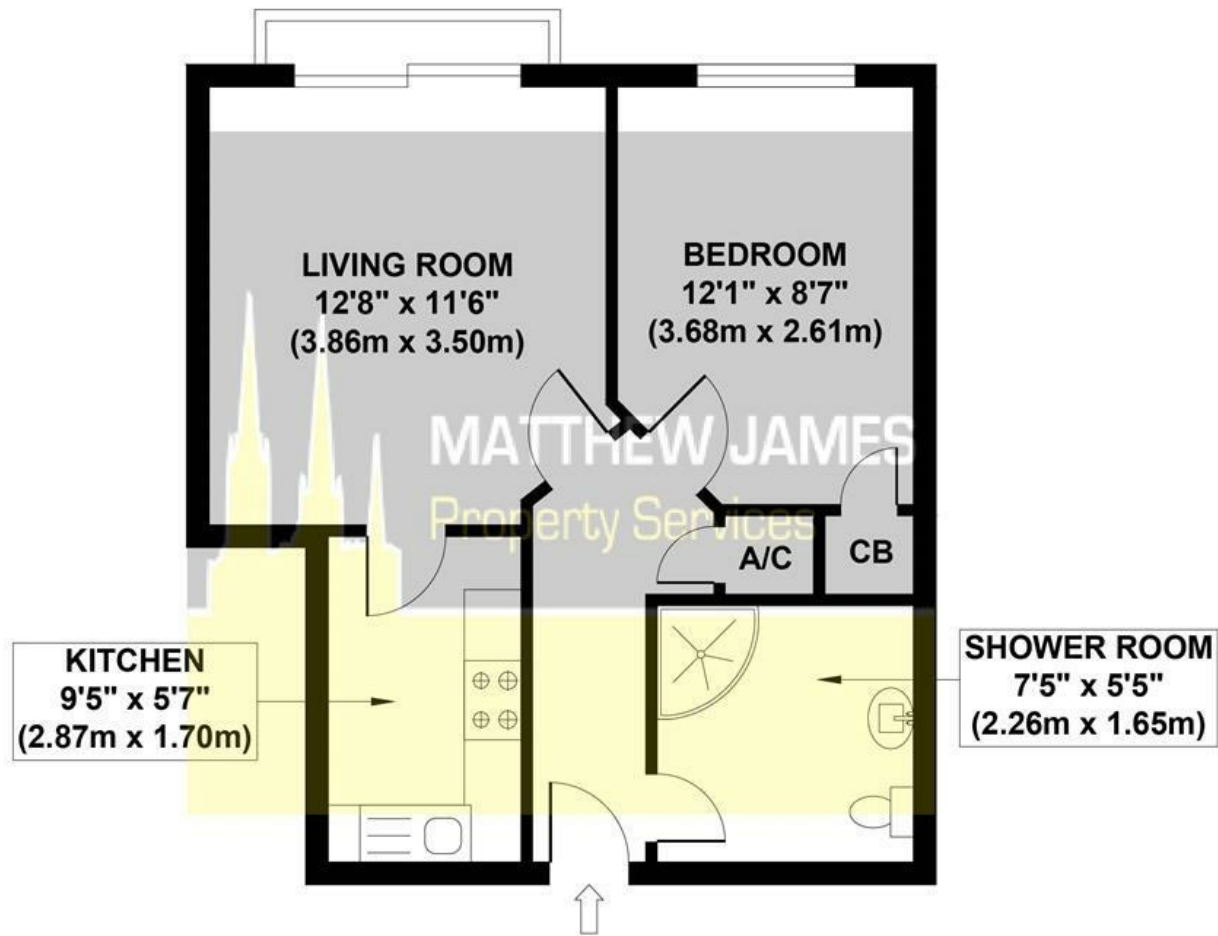


# WOODS COURT

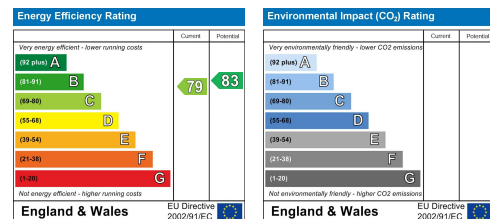
Approximate Gross Internal Area  
423 sq ft / 39.30 sq m



**GROSS INTERNAL FLOOR AREA 423 SQ FT**

Although every attempt has been made to ensure accuracy, all measurements are approximate and no responsibility is taken for any error, omission, or mid-statement. This floor plan is for illustrative purposes only and not to scale. Measured in accordance to RICS standards.

These particulars, whilst believed to be accurate are set out as a general outline only for guidance and do not constitute any part of an offer or contract. Intending purchasers should not rely on them as statements of representation of fact, but must satisfy themselves by inspection or otherwise as to their accuracy. No person in this firm's employment has the authority to make or give any representation or warranty in respect of the property.



## 8 Woods Court Kettlebrook Road , Tamworth B77 1BL

ONE DOUBLE BEDROOM... FIRST FLOOR... LIFT TO ALL FLOORS... VACANT... NO UPWARD CHAIN... OVER 50'S ONLY... CAR PARKING... LONG LEASE... Located on Kettlebrook Road in Tamworth, this lovely apartment needs to be viewed to appreciate what is being offered for sale. Located on the first floor and accessible via a lift or stairwell it briefly comprises of shower room with walk-in corner shower enclosure, double bedroom with built-in wardrobe, lounge dining room with French doors to a Juliet balcony and fully fitted kitchen. The property has PVCu double glazed windows and electric heating throughout and also has the added benefit of being VACANT with NO UPWARD CHAIN. The development is also for the over 50's and has a car park to the rear for residents and secure access into the building. Call us now to book your immediate viewing.

**£84,000**

**CONTACT INFORMATION**

24a Warwick Row, Coventry CV1 1EY

02477 170170

info@matthewjames.uk.com

www.matthewjames.uk.com

Facebook

Twitter

# 8 Woods Court Kettlebrook Road

, Tamworth B77 1BL



- One Double Bedroom
- First Floor
- Car Parking
- Electric Heating & Double Glazed
- Vacant
- Lift & Stairs To All Floors
- Shower Room
- No Upward Chain
- Over 50's Only Development
- Long Lease of 980 YEARS

## Communal Areas

### Entrance Hallway

### Shower Room

7'5 x 5'5 (2.26m x 1.65m)

### Double Bedroom

12'1 x 8'7 (3.68m x 2.62m)

### Living Room

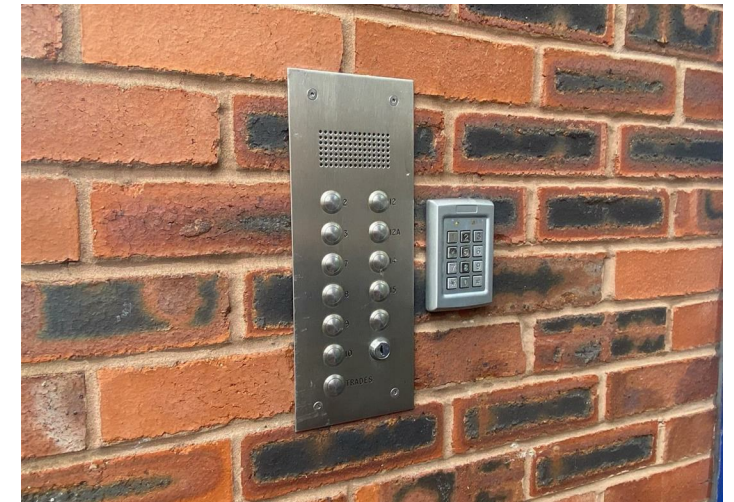
12'8 x 11'6 (3.86m x 3.51m)

### Kitchen

9'5 x 5'7 (2.87m x 1.70m)

### Car Parking

### Other information:



## Directions

